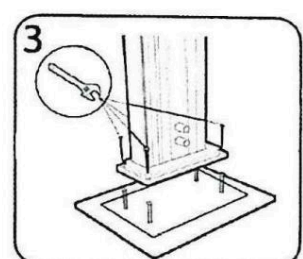
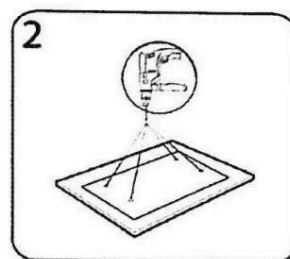
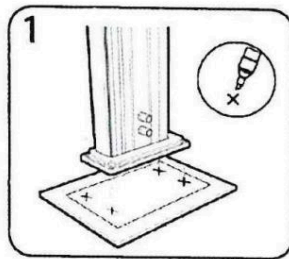
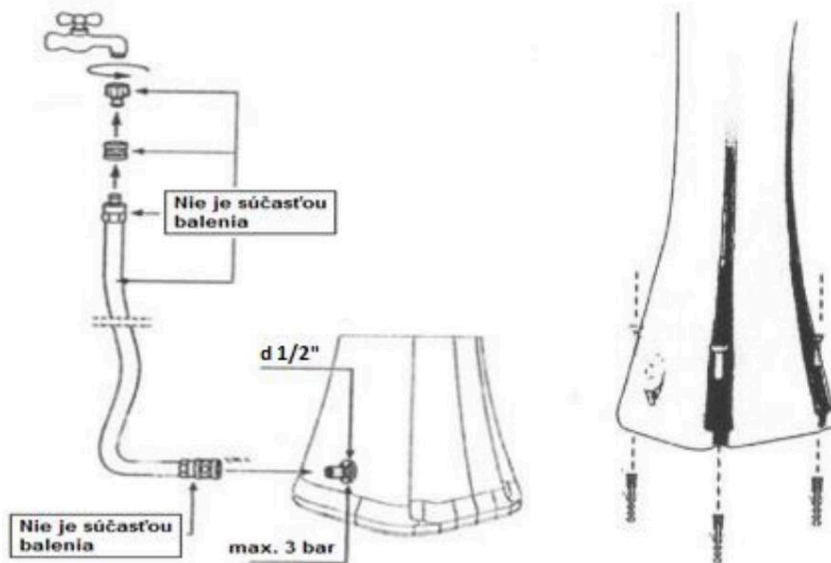


# Solar shower - instructions for use



When installing the shower, it is necessary to install a reducing valve for the connection, which is not part of the delivery!!! (it is set to a pressure of 2.8 bar)

## Installation

1. Choose a suitable place for installation, exposed to direct sunlight, near the water connection and sewage. Water connection means water from the source of the municipal/local water supply. If the shower is to be fed to a connection with high hardness water, it is necessary to install a suitable softening filter at the inlet.
2. Install the shower head.
3. Drill 4 holes with a diameter of 12 mm, 70 mm deep, on a solid surface (concrete, tile, or wooden floor) which you can indicate by the mounting holes in the lower part of the shower.
4. Anchor the shower with screws.
5. Connect the water connection, if necessary use an adapter.

## First use

1. Open the faucet and release the air to fill the shower with water.
2. When the water starts to flow from the head, the shower is already full of water, close the faucet. After heating, the shower is ready for use.

**Warning:** in areas where the outside temperature drops below 3°C, ensure that the water is drained from the shower (disconnect the water supply, open (SCREW BY HAND) the safety valve (stopper) on the bottom of the shower, open the mixer tap and the foot rinse valve, make sure the shower container is empty!) There are two safety valves (plugs) with the DADA shower!

**There must not be any water left in the shower** to prevent it from being damaged by freezing, or move the shower to dry areas where it will not freeze during the winter. Damage caused by freezing, which causes leaks, bulging, cracks, peeling of the colored surface, etc. is not covered by the warranty!

The warranty also does not cover cases where, as a result of scale deposits inside the shower, corrosion of the aluminum walls occurs and subsequently the formation of bubbles on the outer surface of the shower with peeling of the finish, or if the shower head is clogged/damaged by scale! In the case of hard water, it is advisable to pre-install a softening polyphosphate filter.

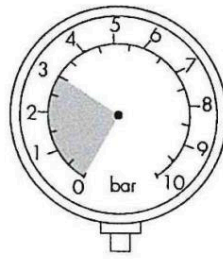
It is also inadmissible to drill (enlarge) the four anchoring holes, this may cause damage that is not covered by the warranty!

This manual applies to all Arkema solar shower models.

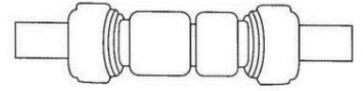
### 1. SHOWER LOCATION



### 2. PLUMBING CONNECTION

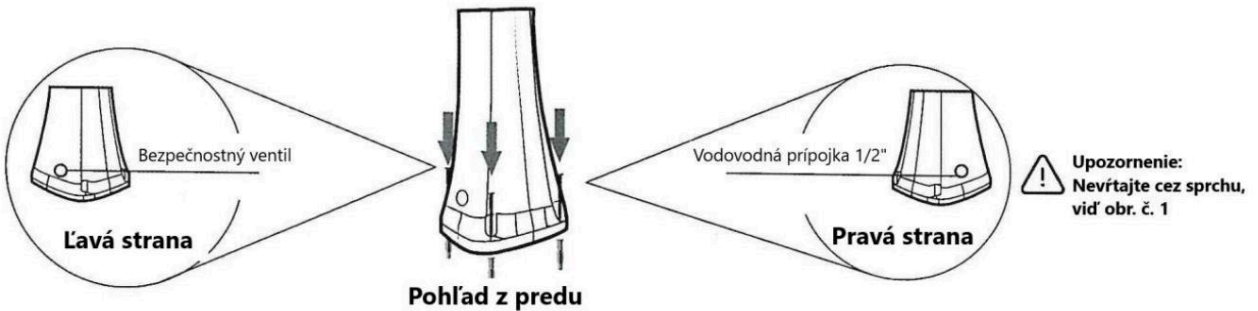


Water pressure MAX 3 bars



Garden quick-coupling

### 3. SHOWER ATTACHMENT



The DADA shower has two safety valves (on both sides) and a connection on the back side!

### 4. USE OF THE SHOWER



### WINTERING

#### 1. DRAINING OF WATER



The DADA shower has two safety valves (on both sides) and a connection on the back side!

#### 2. COVER SHEET

